



Agriculture Compatibility Evaluation Criteria

Floodplains Reimagined



Overview

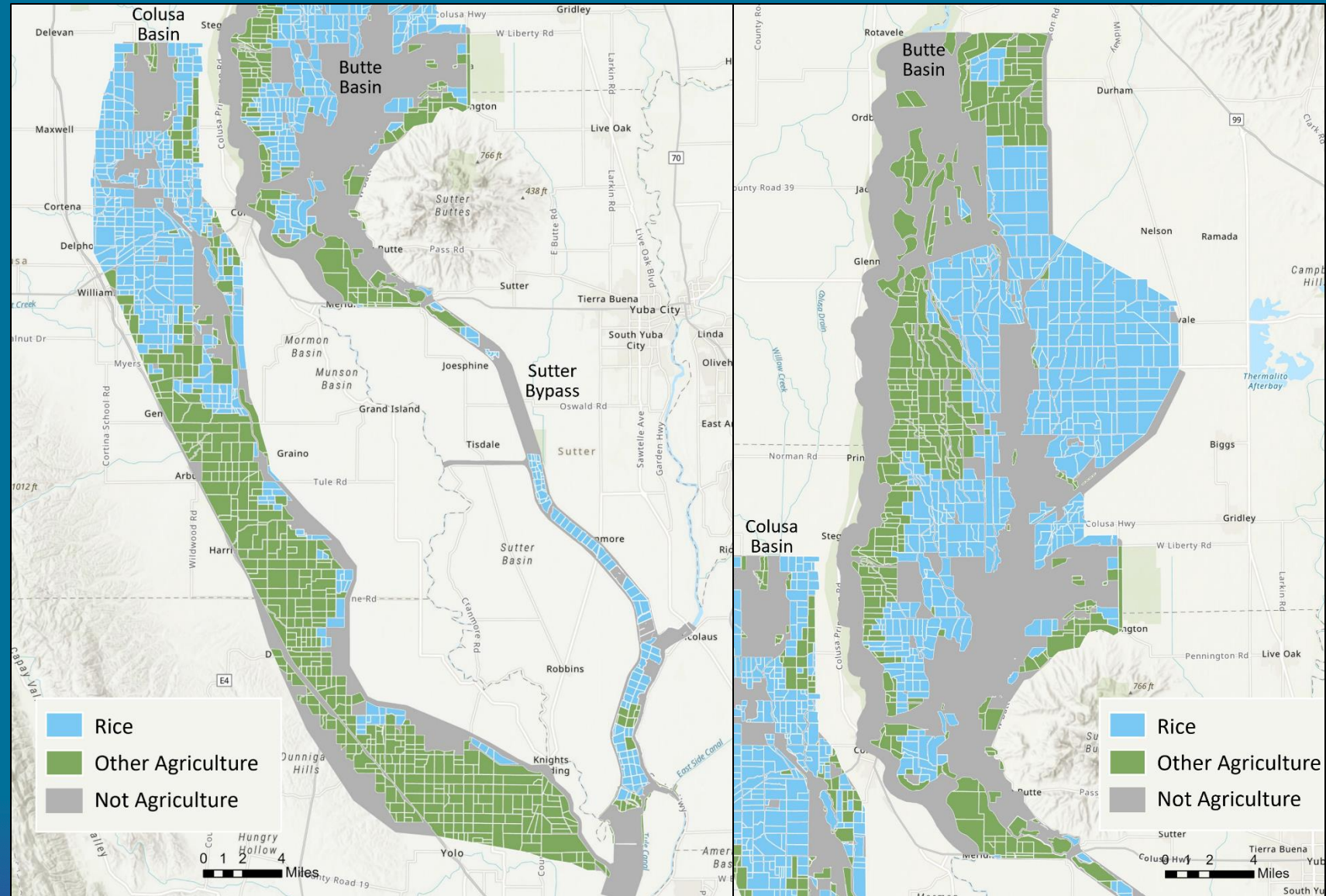
- **Floodplains Reimagined Objectives**
- **Criteria**
 - Background
 - Parameters
 - Start Date Rationale
- **Summary**
- **Recommendations**

Floodplains Reimagined Objectives

- **Principles**
 - Landowner willingness
 - Voluntary
- **Priority**
 - Agriculture
- **Objectives**
 - Do no harm to existing property, operations, and water rights
 - Limit actions to voluntary actions
 - Maintain planting, growing, and harvest seasons

Agriculture Compatibility Evaluation Criteria

- Parameters
 - Wet Field
 - Field Preparation Time
 - Season Start Date
- Metrics
 - Cumulative Days Impacted
 - Last Day Wet



Criteria Background

- **Bay Delta Conservation Plan (BDCP)**
 - Howitt et al. (2013) prepared an ag-econ impact study for Yolo County
- **Yolo Bypass Salmonid Habitat Restoration and Fish Passage Project (YBSHRFPP)**
 - ERA Economics (2017) prepared an ag-econ impact study for DWR
 - Assumes 6-day drydown + 28 days of prep (34-day prep time) prior to planting (ERA Economics, 2015)
 - Assumes March 15 operational impact threshold for ag
- **Lower Sutter Bypass Anadromous Fish Habitat Enhancement Planning Assessment (LSB)**
 - Pacific Agroecology (2022) prepared an ag-econ impact study for River Partners
 - Also assumes 34-day prep time prior to planting and March 15 operational threshold for ag
- **Sutter and Tisdale Bypasses Flood and Multi-Benefit Management Plan (SBMP)**
 - Ag-econ impact study was not performed
 - Assumes March 1 operational impact threshold for ag north of Nelson Slough

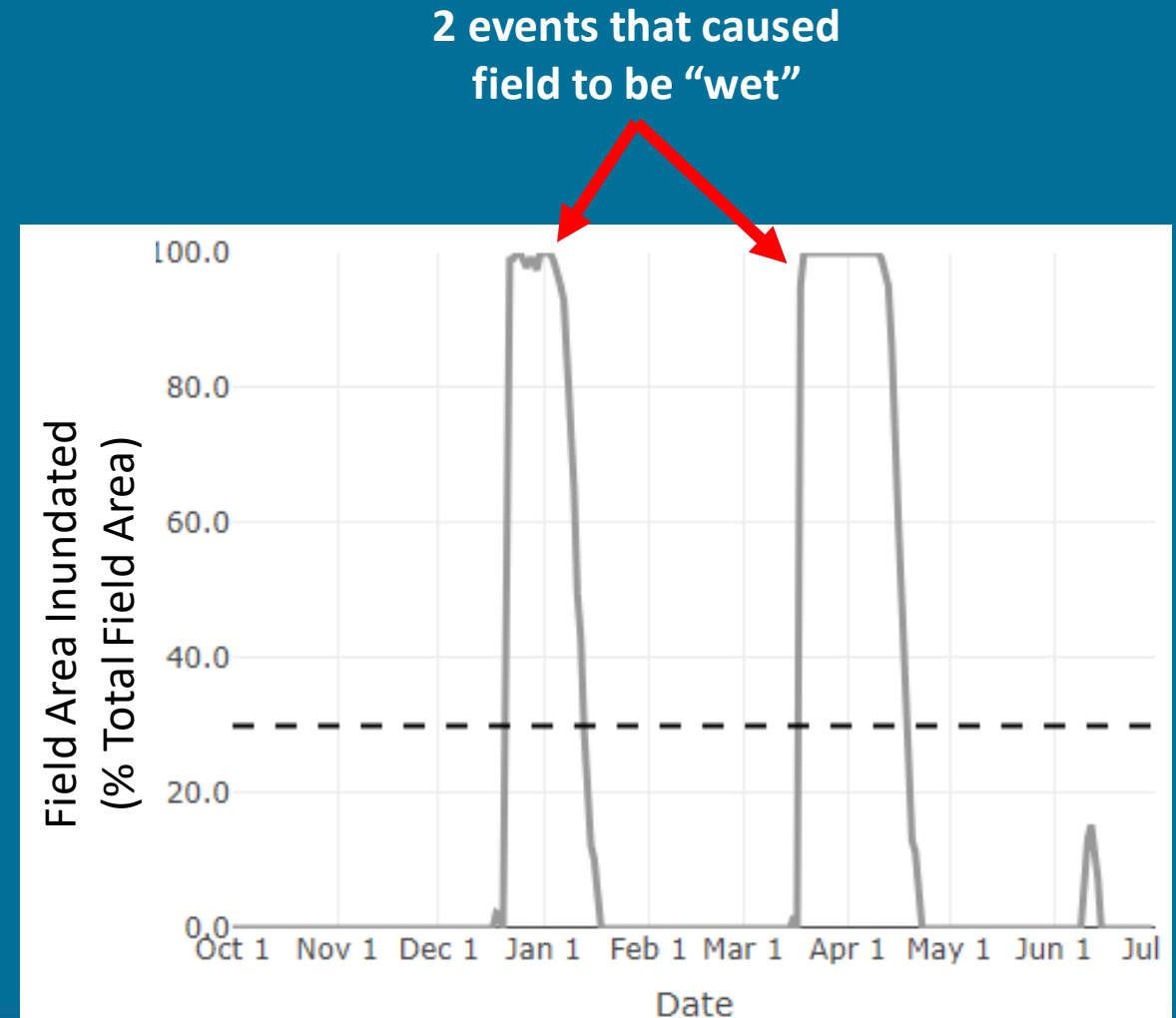
Criteria Parameters

- **Wet Field**

- Based on landowner feedback from the 2013 and 2017 ag-econ studies
- If a field is > 70% dry (or < 30% wet), farmers likely able to begin field preparations

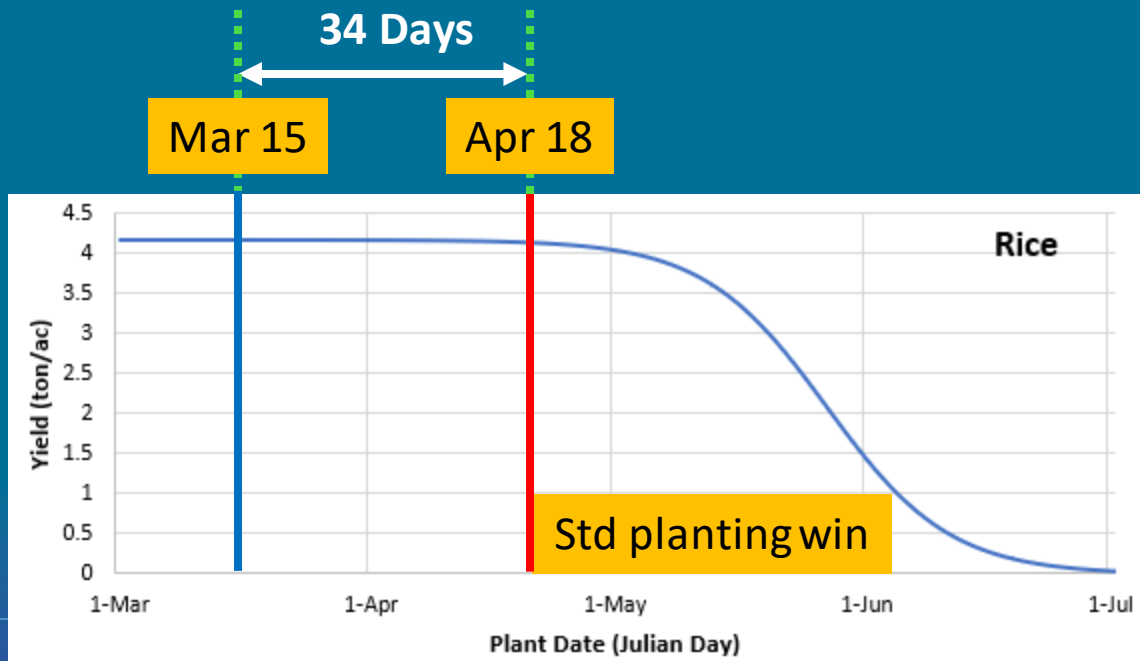
- **Field Preparation Time**

- Timing based on landowner feedback (Yolo County, 2013; ERA Economics, 2015)
- Assumed 34 days prior to planting needed
 - Misc dry-down time of 6 days
 - Field prep time of 28 days
 - Note: can vary from year to year

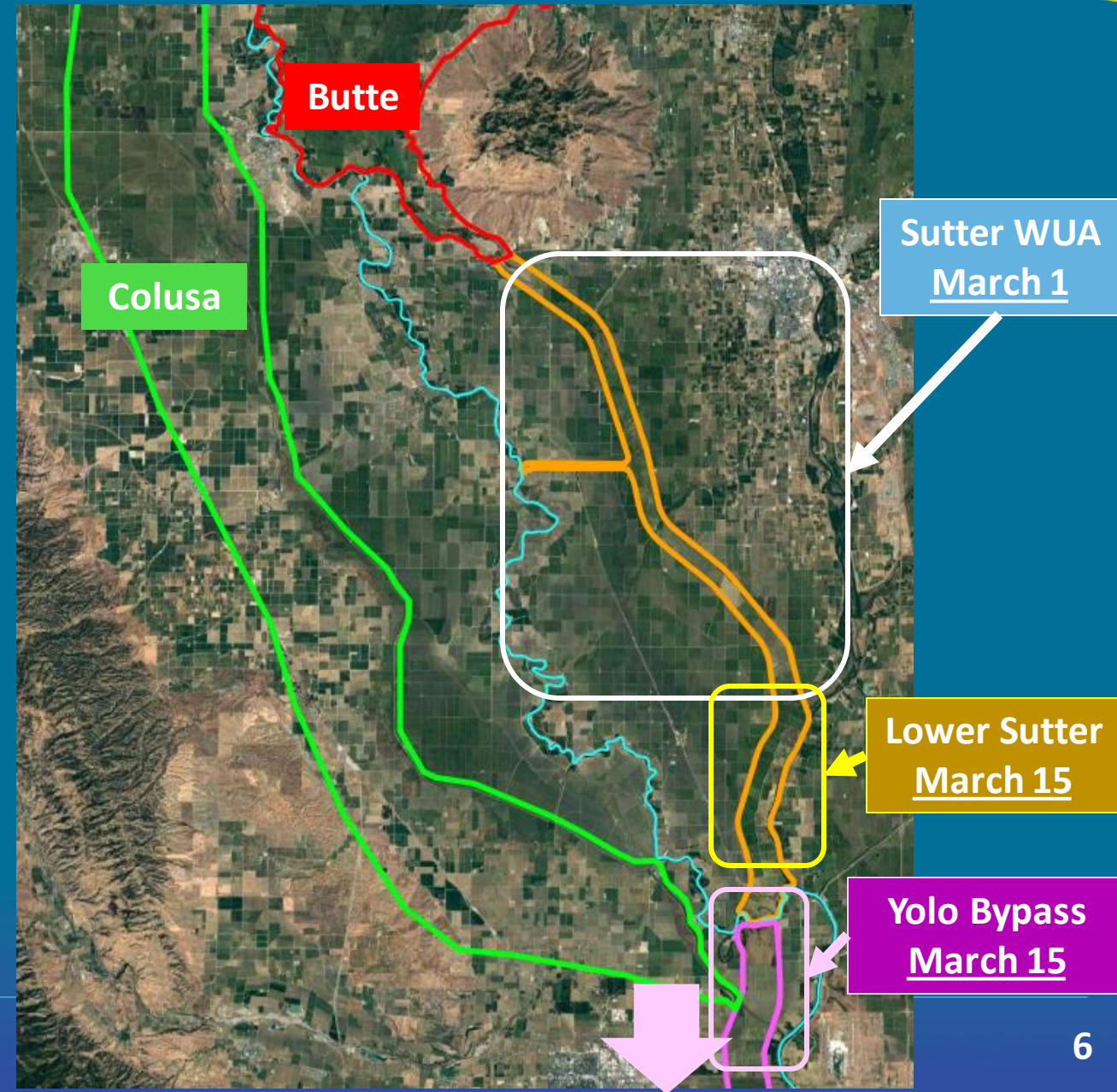


Season Start Date Rationale

- Operational Start Date from Rice
 - Yield potential diminishes if planted after mid-April
 - With 34-day total prep time, if inundation occurs after March 15, yield impacts will be realized



Source: Howitt et al., 2013



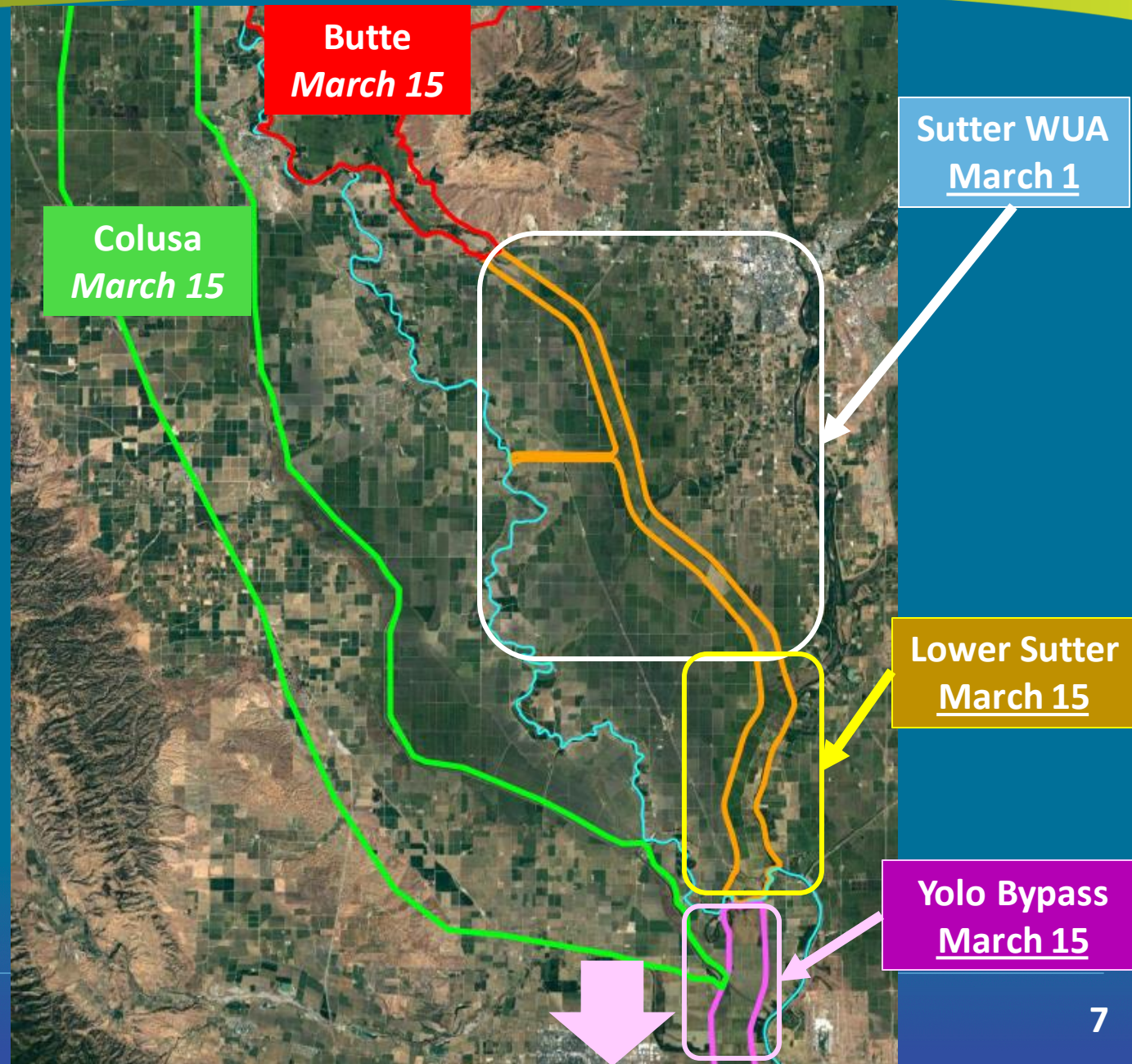
Agricultural Compatibility Evaluation Criteria Summary

Parameters

- Wet Field = $\geq 30\%$ wet area
- Field Prep = 34 days
- Operational Season Start Date
 - March 15
 - *Butte Basin*
 - *Colusa Basin*
 - Lower Sutter Bypass (below Nelson Slough)
 - Yolo Bypass
 - March 1
 - Sutter Bypass (above Nelson Slough)

Metrics

- Cumulative days impacted after season start
- Last Day Wet



Action for the Advisory Committee

**Recommendation of Agricultural Compatibility Evaluation Criteria
to Steering Committee**